

HERITAGE REPORT

VOLUME 16, ISSUE 1: **SUMMER 2021**

TABLE OF CONTENTS

LETTER FROM THE DIRECTOR 2

FY22 MHAA GRANT PROPOSALS.. 2

FY21 HM MINI GRANTS, ROUND 2....2

UPDATES ON PROJECTS
SUPPORTED BY HM GRANTS.....3

ECONOMIC IMPACT REPORT4

PARTNER EVENTS 4

FUNDRAISING THANKS..... 5

2021 MONTGOMERY COUNTY
HISTORY CONFERENCE 5

MONTGOMERY COUNTY
HISTORY DAY 5



GREAT FALLS TAVERN (PHOTO CREDIT: EFRAIN VARGAS)



NATIONAL CAPITAL TROLLEY MUSEUM

HERITAGE DAYS & HERITAGE HARVEST

Looks like things are returning to “normal!” With that in mind, we are starting to plan a combined Heritage Days and Heritage Harvest event for the weekend of October 16 and 17, 2021 to celebrate our partners’ sites and programs.

We’re going a little free form as we all reopen, to accommodate everyone’s needs. Each partner has handled the last year in different ways – some went online, some had outdoor programs, some used the time to develop new offerings, while many had to close their doors. Heritage Days/Heritage

Harvest 2021 will allow partners to welcome back old friends and reach out to new ones.

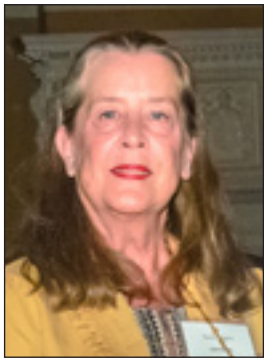
Following county and State guidelines, sites may plan to open their venues, have a table at another site, host online programs, or offer limited tours. Plans will take into account the needs of both on-site staff and visitors to feel comfortable and safe.

As always, Heritage Montgomery will offer technical support as well as promotion for the event. We look forward to seeing you all in October!

TO HELP KEEP OUR PARTNERS IN THE PUBLIC EYE, HERITAGE MONTGOMERY HAS CONTRACTED A VIDEO TEAM TO SHOOT SHORT VIGNETTES OF MOST OF OUR PARTNER SITES. THESE 3 TO 4-MINUTE VIDEOS WILL BE AVAILABLE ON PARTNER AND HM WEBSITES AND WILL BE USED BY VISIT MONTGOMERY IN PROMOTING THE HERITAGE AREA.

IN THE COMING WEEKS WE WILL BE CONTACTING PARTNERS TO SCHEDULE SHOOTING AND DEVELOP SCRIPTS FOR THE PROJECT. THE VIDEOS WILL BE POSTED ON HM’S WEBSITE AS THEY ARE COMPLETED.

LETTER FROM THE DIRECTOR



Greetings All,

As we head into summer, we are looking forward to being out and about in the heritage area once again! HM has been working on several exciting projects as well as helping our partner sites reopen to the public.

In April, we began a video project aimed at providing short videos of our museums and parks offering an overview of each destination. The videos will be used by HM, Visit Montgomery, and heritage area sites to highlight the activities, collections, and tours that can be found around the county.

At the end of June, we will release our new African American Heritage brochure. It will tell the history of Black residents in the county from settlement through today and serve as a guide to places to visit. This is the first of four brochures focused on the heritage area's themes. Look for the Transportation, Agricultural Reserve, and Heritage Gems brochures later this year.

We've had a busy grant season this year, full of great projects for State funding. HM was also able to fund a second round of Mini Grants to aid our partners in reopening to the public. These grants reflect lessons learned from the pandemic and public safety as well as the energy and enthusiasm sites are bringing to getting back to normal and welcoming visitors.

I look forward to seeing you all as we rediscover all the wonderful things there are to see and do here in Montgomery County!

HERITAGE MONTGOMERY STAFF

Sarah L. Rogers, Executive Director
director@HeritageMontgomery.org

Lori Ranney, Deputy Director
lori@HeritageMontgomery.org

Like us on Facebook

This project has been financed in part with State funds from the Maryland Heritage Areas Authority.



FY22 MHAA GRANT PROPOSALS

We are pleased to have submitted ten heritage area grants to the Maryland Heritage Areas Authority (MHAA) for the FY22 State grant round. The requests total over \$530,000. Awards will be announced in August.

Audubon Naturalist Society – interpretation for Woodend Nature Sanctuary trails

Menare Foundation – barn restoration

Montgomery County Department of Transportation – Hoyle's Mill stabilization

Montgomery County Historical Society – website redesign

National Capitol Trolley Museum – CTCO 1430 trolley restoration

Odd Fellows Lodge – signage

Sandy Spring Museum – trails and signage

Scotland AME Zion Church – building stabilization

Smithville School – landscape and museum development

Visit Montgomery – heritage area marketing



FY21 HM MINI GRANTS, ROUND 2

To assist partners in reopening to the public, HM offered a second round of Mini-Grant funding. Grants totaling over \$10,000 were awarded to:

Audubon Naturalist Society – summer camp supplies

Docs In Progress – classroom supplies

Germantown Historical Society – flea market site supplies

Glen Echo Park Partnership – summer camp supplies

Historic Medley District – site maintenance and supplies

The Menare Foundation – Button Farm signage

Sandy Spring Museum – driving tour maps

Sandy Spring Slave Museum – brochure

Warren Historic Site Committee – maintenance

UPDATES ON PROJECTS SUPPORTED BY HM GRANTS



THE CIVILIAN CONSERVATION CORPS TRAIL SIGNS ARE UP AT CARDEROCK

The year 2021 marks the 50th anniversary of the C&O Canal National Historical Park joining the National Park Service system. Join the celebration by visiting the canal! You can plan your visit and learn more about how the community is celebrating by visiting CanalTrust.org and clicking the About Us tab. You will find information about anniversary events including the C&O Canal Libations Trail, photography competition, overnight stays in a lockhouse, and special events.



CAROUSEL RIBBON CUTTING

On May 1st, Glen Echo Park reopened the restored Dentzel carousel for its 100th anniversary. The historic carousel features an unusual array of animals including 40 horses, four rabbits, four ostriches, a giraffe, and a tiger, all decorated in vibrant colors. The masked attendees included County Executive Marc Elrich, members of the County Council, and State representatives. The event concluded with a socially distanced carousel ride for the group which was enjoyed by all. More info at GlenEchoPark.org.



THE NEW VISITOR CENTER

The long-awaited, state-of-the-art Josiah Henson Museum & Park opened its doors in April. The N. Bethesda museum focuses on the story of Josiah Henson, an enslaved man on the Riley plantation, and his evolution from plantation foreman to preacher to a freeman founding the New Dawn settlement in Canada. Henson inspired Harriet Beecher Stowe's book *Uncle Tom's Cabin* and the site exhibits elegantly present the complicated issues facing Henson and his legacy. Visit MontgomeryParks.org for hours.



WARREN HISTORIC SITE

Dr. Blair's UMBC public history class continued work on the Warren Historic Site project. Building on the efforts of previous classes at the property, an in-depth site proposal was produced with plans for building restoration, fundraising, collection archiving, and connecting to the community. Though they were able to meet only once – masked up and socially distanced – they completed this phase of the project which will guide future classes and ultimately result in a National Historic Register nomination for Warren.

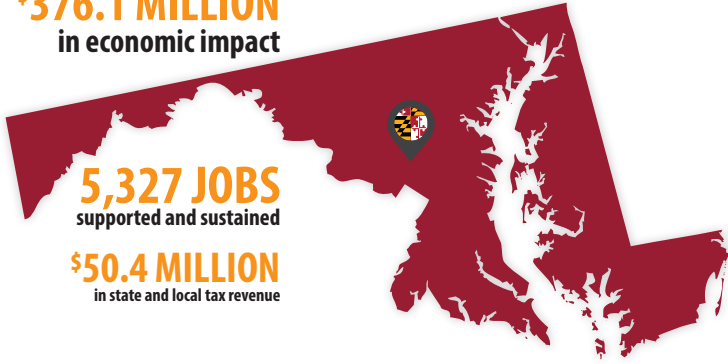
ECONOMIC IMPACT REPORT

HERITAGE MONTGOMERY MAKES AN IMPACT

\$376.1 MILLION
in economic impact

5,327 JOBS
supported and sustained

\$50.4 MILLION
in state and local tax revenue



FAST FACTS ABOUT HERITAGE MONTGOMERY

2

STATE PARKS: **SENECA CREEK AND PATUXANT RIVER**

SPONSORED COUNTYWIDE CELEBRATIONS – HERITAGE DAYS AND HARVEST DAYS – HIGHLIGHTING LOCAL PARKS, FARMS, MUSEUMS, AND HISTORIC SITES.

3

NATIONAL PARKS: **C&O CANAL NATIONAL HISTORICAL PARK, GLEN ECHO PARK AND CLARA BARTON NATIONAL HISTORIC SITE**

40+

HISTORIC 1800S AFRICAN AMERICAN COMMUNITIES FOUNDED BOTH BEFORE AND AFTER EMANCIPATION. CHURCHES, COMMUNITY BUILDINGS, CEMETERIES, AND SCHOOLS PAY TRIBUTE TO THE DEDICATION AND STRENGTH OF THEIR FOUNDING FAMILIES.

100+

PROTECTED RUSTIC ROADS: MILES OF HISTORIC EARLY ROADS WINDING THROUGH SCENIC LANDSCAPES AND EARLY CROSSROADS TOWNS.

400+

COUNTY & REGIONAL PARKS: **BLACK HILL REGIONAL PARK, CABIN JOHN REGIONAL PARK, LITTLE BENNETT REGIONAL PARK, ROCK CREEK REGIONAL PARK, AND WHEATON REGIONAL PARK.**

INTERESTING FACTS

THE "AG RESERVE": 93,000 ACRES OF PRESERVED FARMLAND PROTECTING THE COUNTY'S AGRICULTURAL HERITAGE AND FOSTERING A SUSTAINABLE FUTURE FOR FARM BUSINESSES AND NATURAL RESOURCES.

CIVIL WAR HISTORY: DURING THE 1860S, RESIDENTS OF MONTGOMERY COUNTY LIVED IN A WAR ZONE. STRATEGICALLY LOCATED NEXT TO WASHINGTON, DC, MONTGOMERY COUNTY WAS TRAVERSED AND OCCUPIED BY THOUSANDS OF TROOPS FROM BOTH NORTH AND SOUTH.

MUSEUMS AND HISTORIC SITES THROUGHOUT THE HERITAGE AREA PUT A SPOTLIGHT ON UNIQUE LOCAL HISTORY INCLUDING THE STORIES OF QUAKER HERITAGE, RAILROAD TOWNS, AND AGRICULTURE.

PLACES TO VISIT



Audubon Naturalist Society,
Chevy Chase
ANShome.org
Grounds and trails open sunrise to sunset; programs throughout the week.

Button Farm Living History Center, Boyds
ButtonFarm.org
Saturdays, noon to 3pm. Open by reservation only for self-guided tours.

Glen Echo Park, Glen Echo
GlenEchoPark.org
Reopening with classes, shows, galleries, and carousel rides.

Montgomery Parks
MontgomeryParks.org
Many parks are reopening with special programs as well as trails to bike and hike. See the Discover the Parks section on their home page.

National Capital Trolley Museum, Colesville
DCTrolley.org
Saturdays, noon to 4pm. Reservations recommended for guided tours and trolley rides.

Peerless Rockville, Rockville
PeerlessRockville.org
Reopening with timed reservations for new exhibit and programs.

Sandy Spring Museum,
Sandy Spring
SandySpringMuseum.org
Monday & Wednesday, 10am to 4pm; Friday, 10am to 8pm; Sunday, noon to 4pm. New exhibits and in-person and virtual events.

Sandy Spring Slave Museum,
Sandy Spring
SandySpringSlaveMuseum.org
Reopening for tours by appointment, new outdoor displays.

The Maryland Heritage Areas Authority produced an economic impact report documenting the impact of each of the 13 Maryland Heritage Areas. Sites and venues throughout Heritage Montgomery supplied data for the HM report which showed the heritage area's economic impact is \$376.1 million.

Since 1996, nearly \$43 million in financial assistance has been awarded, along with more than \$1.6 billion in non-State funds, for heritage tourism projects and leveraged activities. There are 4,177 square miles of heritage areas in Maryland that see over 20 million visitors each year. The heritage areas contribute over \$319 million in annual State and local tax impact.

We want to thank our partners, local businesses, visitors, supporters, and county and State government officials for being a part this successful program!



FUNDRAISING THANKS

Our sincere thanks to the many contributors to our FY21 fundraising efforts. As a result of their generosity we are able to further support partner projects in the heritage area!

Bruce Adams
Rebecca Ballo
Donald Barron
Sheila Bashiri
Rita Bauman
Joel Chalfin
Abby Clouse
Tony Cohen
Ruth Derr
Mary and Garner Duvall
Ying Fang

Elaine Fors in memory of
Arthur Virts
Donald Housley
Thomas Kettler
David Langstaff
Eric Ledbetter
Isiah and Catherine Leggett
Sara and Steven Mathis
Eileen McGuckian and
Philip Cantelon
Yadin and David Mendick

Wesley Paulson
Harold Pskowski
Heidi Schlag
TJT Architects
Warren Historic Site
Linda Weaver
Allison Weiss
Patricia White
Elizabeth and Robert Wilbur
Laura Anderson Wright

ALL-VIRTUAL 2021 MONTGOMERY COUNTY HISTORY CONFERENCE



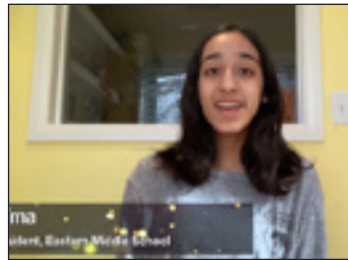
JOSIAH HENSON MUSEUM EXHIBIT

The 15th annual Montgomery County History Conference, hosted by Montgomery History and sponsored in part by Heritage Montgomery, was entirely virtual this year. Held from January 22-30, the conference brings together residents, policymakers, students, and teachers to learn about the county's history and understand how it informs our present.

The keynote sessions highlighted history that speaks directly to local issues, including: a session on Native Americans in the region; a presentation on a history of Confederate monuments; an overview of the new Josiah Henson Museum & Park in Rockville; and a musical performance that explored the role of Black musicians in traditional "old-time" music.

To find out more or get information about how to access recordings, visit MontgomeryHistory.org/2021-mchc/ or contact Montgomery History staff at HistoryConference@MontgomeryHistory.org.

MONTGOMERY COUNTY STUDENTS LEARN ABOUT HISTORY HANDS-ON



UMA, A FORMER NHD PARTICIPANT, CONGRATULATES HER PEERS DURING THE COUNTY VIRTUAL AWARD CEREMONY ON MARCH 20.

Montgomery County History Day, an annual event sponsored by Heritage Montgomery, is reaching more students each year. During the yearly competition students develop a research project around a theme from history. This year, it was "Communication in

History: The Key to Understanding." As students create papers, exhibits, documentaries, websites, or performances, they build critical thinking skills, learn best practices for evaluating sources, develop confidence in their public speaking skills, and learn about history topics that foster further interest.

History Day is organized by Montgomery County Public Schools and Montgomery History. This year, over 3,000 students from across the county – nearly 1,000 more than in 2020 – competed virtually.

Heritage Montgomery would like to congratulate all the county students, teachers, and parents who participated and wish good luck to the 12 local students competing at the national event June 13-19!



Heritage Tourism Alliance of Montgomery County

P.O. Box 10237
Gaithersburg, MD 20898

301-515-0753 • HeritageMontgomery.org

HERITAGE PROFILE



County, State, & National Parks

located throughout Montgomery County
HeritageMontgomery.org/places-to-go/trails-parks

This summer will be a great time to take advantage of the many county, state, and national parks located in the heritage area. Most outdoor activities are now open to the public; visitor centers and other park facilities are gradually reopening. On the HM website under the Places to Go tab you will find the Trails & Parks page. Links to Montgomery Parks sites, Seneca Creek and Patuxent River State Parks, the C&O Canal National Historical Park, and more tell you all you need to know when planning your next park visit!

HERITAGE MONTGOMERY BOARD OF DIRECTORS

Laura Anderson Wright, Sandy Spring
Slave Museum – President

Sheila Bashiri, City of Rockville –
Vice President

Heidi Glatfelter Schlag,
C&O Canal Trust – Secretary

Ying Fang, CPA – Treasurer

Rebecca Ballo, Montgomery
County Planning Department

Abby Clouse-Radigan, Historic
Medley District

Anthony Cohen, The Menare
Foundation

Allison Weiss, Sandy Spring Museum