



## The C&O Canal Trust is seeking skilled and motivated volunteers for Canal Quarters!

The C&O Canal Trust, in partnership with the National Park Service, has created an exciting and unique program, Canal Quarters, in the Chesapeake & Ohio National Historical Park. Canal Quarters provides visitors to the park with an educational and interpretive experience unlike anything available elsewhere in the National Park system.

Beginning in 2009, visitors to the C&O Canal are now able to learn and experience first-hand what it was like to be a locktender on the 184.5-mile long canal and stay overnight in a historic lockhouse. Lockhouses 6 (Brookmont), 10 (Cabin John), 22 (Pennyfield), 25 (Poolesville), 28 (Point of Rocks), and 49 (Clear Spring) are now open to visitors. These original structures, dating from the 1830's and listed on the National Register of Historic Places, served as homes for the locktenders, the men who opened and closed the lock gates for the mule-drawn canal boats, and their families.

Canal Quarters requires active and regular involvement by volunteer organizations and individuals to oversee and maintain the structures used by the public. The C&O Canal Trust is responsible for the recruitment, oversight, and recognition of the volunteer corps – known as Quartermasters – with the close involvement and oversight of the National Park Service.

**We are currently recruiting for quartermasters for each Lockhouse!**



## Quartermaster Responsibilities

The ideal Quartermaster is someone who has one or more of the following qualities:

- Lives near the lockhouse/ could pass by frequently
- Has good home maintenance and repair skills/ is able to lift up to 40 pounds,
- Is familiar with National Park Service procedures
- Would enjoy the responsibility as National Park Service volunteer working with historic preservation and care

The Quartermaster's primary responsibility is to maintain oversight of the lockhouse through frequent on-site inspections and frequent communication with the Trust about issues that arise. Specifically, the Quartermaster will be expected to do the following:

- Change lockbox access code every week
- Respond to on-site visitor concerns
- Make sure guests clean up after themselves, watch for personal items or messes that get left behind
- Small routine maintenance projects (such as touch-up painting, tightening washers, etc)
- Stock cleaning and bathroom supplies
- Replace fire detector batteries if needed
- Make sure fire extinguishers get inspected as needed
- Look for hazards on towpath (such as fallen trees or branches)
- Pest monitoring/ placing appropriate traps
- Maintain yard – clean picnic tables and fire grills, use mowers in basement to mow the lawn when needed
- Report any non-compliance to NPS rules and illegal activities

To Apply

If you are interested in applying to serve as a Quartermaster, please send an email or letter expressing your interest and qualifications to:

Becky Curtis  
C&O Canal Trust  
1850 Dual Highway, Suite 100  
Hagerstown, MD 21740  
[Curtis@canaltrust.org](mailto:Curtis@canaltrust.org)



The Canal Quarters program is a partnership between the C&O Canal Trust and the C&O Canal National Historical Park. Lockhouses can be reserved at

[www.CanalQuarters.org](http://www.CanalQuarters.org)

**Lockhouse 6:**

**Mile Marker: 5.4, near Brookmont, Cabin John (Montgomery County)**

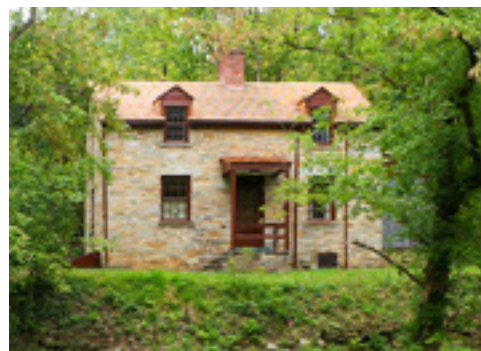
The canal's roots begin with George Washington's dream of a waterway trade route connecting east and west. After its closure in 1924, a second chance came to the canal when Supreme Court Justice William O. Douglas sought to protect this land as an outdoor sanctuary for public recreation. Set in the 1950s of Douglas' famous hike to preserve the canal, Lockhouse 6 is furnished with objects reminiscent of the mid-Twentieth Century. It provides ready access to Georgetown, the feeder canal, and the Capital Crescent Trail.



**Lockhouse 10:**

**Mile Marker: 8.8, near Cabin John, Glen Echo (Montgomery County)**

In the 1930s, the canal was flood ravaged and suffering from neglect. The Civilian Conservation Corps (CCC) based two camps just two miles upstream from Lockhouse 10. Over the course of four years, CCC labor helped transform the Canal. Lockhouse 10 has been furnished to evoke this 1930s time period, including its period kitchen and bathroom, and offers proximity to numerous attractions in Washington, DC. Its forested environs are popular with outdoor enthusiasts including birders, hikers, bikers, runners, fishermen, and canoers.



**Lockhouse 22:**

**Mile Marker: 19.64, near Historic Tobytown, Potomac (Montgomery County)**

The Potomac River is rife with obstacles that thwart water transportation, including rapids and waterfalls. To bypass geological obstacles, canal engineers devised unique structures such as aqueducts, lift bridges, incline planes, tunnels, and lift locks. Lockhouse 22 at Pennyfield reflects the early phase of canal construction, and the furnishings are evocative of the mid-1830s to early 1840s period.



**Lockhouse 25:**

**Mile Marker: 30.9, near Poolesville (Montgomery County)**

This little brick lockhouse, along with the lockkeeper and his family, saw the movements of both Union and Confederate troops crossing the river to battles not so distant. Throughout the war, the canal was a target of Confederate forces determined to interrupt commerce along the canal. Lockhouse 25, originally completed in 1830, interprets the story of the C&O Canal and the town that surrounded Edwards Ferry during the Civil War. The lockhouse is conveniently located 4.5 miles from the town of Poolesville, MD, providing access to groceries and supplies, as well as additional historical discoveries!



**Lockhouse 28:**

**Mile Marker: 48.93, near Point of Rocks (Frederick County)**

Lockhouse 28 stands as a reminder of the fierce competition between the C&O Canal and the B&O Railroad in the race to the Ohio River Valley. At Point of Rocks, the narrow land between the Potomac River and the rocky outcropping was imperative to winning the race west. Both canal and railroad were given rights-of-way, with the C&O Canal allowed to build next to the river, and the B&O Railroad forced to carve its way through the hillside just above the canal. Today, Lockhouse 28 is a rustic retreat, situated between the scenic Potomac and the still-active railroad tracks. It is the most remote of the Canal Quarters lockhouses, located nearly 1/2 mile from the nearest parking area.



**Lockhouse 49:**

**Mile Marker: 108.8, near Four Locks, Clear Spring (Washington County)**

Four Locks is a wonderful example of a canal community. The proximity of four locks being built within 1,530 feet of each other created the ideal situation for families, merchants, and people of all classes to come together to build a community. In its heyday Four Locks boasted two stores, two warehouses, a dry dock for boat repair, a school, and post office, plus a dozen houses. Furnished in the 1920's style, Lockhouse 49 depicts the heyday of the canal community at Four Locks.

